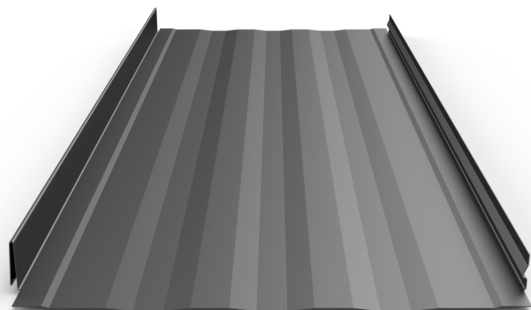
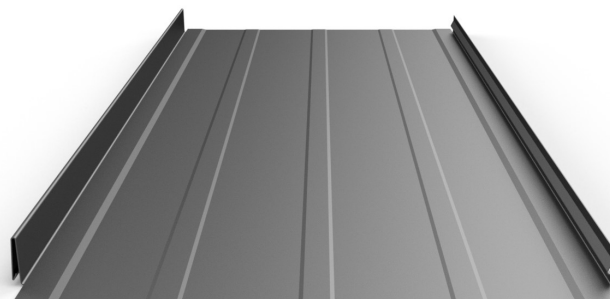


## PANEL PROFILES



**STRIATIONS**

15-5/8" & 19-5/8" coverage options



**ACCENT RIBS**

3 Accent ribs for 15-5/8" panel




The Slim-Lock™ Standing Seam delivers a panel with strong, clean, continuous grace, together with unequaled quality. This provides you a weathertight roof to last a lifetime. Clip systems allow for extremely long panels, without the need for laps.

## KEY FEATURES

- Standard coverages: 15-5/8" & 19-5/8" (24ga. only)  
(For other widths, please inquire)
- Non Standard coverages/requires slitting: 11-7/8" & 12"
- 24 & 22 Tru-Gauge™ and .032" Aluminum
- 16 & 20 oz. Copper (Please inquire)
- Floating clip system: allows for expansion & contraction of panels in longer lengths
- 1-1/2" vertical rib
- Standard factory notched panels
- Concealed fasteners: fasteners cannot leak
- 3:12 minimum pitch recommended  
(For lower pitches, please inquire)
- Standard panel lengths 4' to 60'  
Minimum length 3' Notched  
Minimum length 1' Not Notched  
(For longer panels, please inquire)
- 2' Shortcut capability (Fee applicable)
- Onsite roll forming available
- Panel options: Striations, Accent Ribs, and Flat Pan
- Manufactured in Salem, Oregon

## TESTING

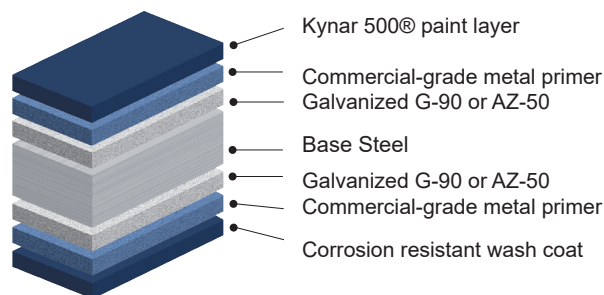
-  Code compliance UL Evaluation Report  
UL ER #25913-01
- UL Construction No. 589  
(Slim-Lock™ carries its UL Classifications under the  
Clip-Lock 150 (CA) profile designation)
- UL 580 Class 90 - Wind Uplift
- UL 790 Class A (ASTM E108) - Fire rated
- UL 2218 Class 4 - Impact (hail) rated
- ASTM A653/A924 - G90 Galvanized
- ASTM A792 - Zincalume/Galvalume AZ-50/55
- ASTM B209 - Aluminum Substrate

## MATERIAL SPECIFICATIONS

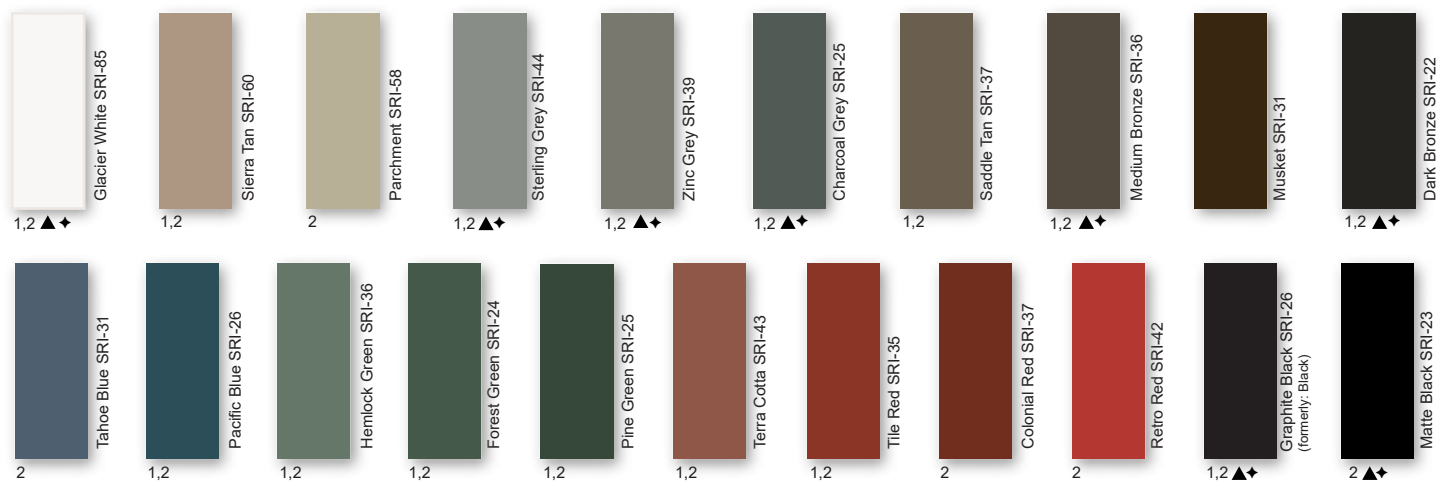
- 24 gauge Kynar 500® Painted Steel  
G-90 Galvanized or AZ-50
- 24 & 22 gauge bare Zinalume® Plus  
AZ-55 (No finish warranty – 25 yr.  
perforation warranty)
- ▲22 gauge Kynar 500® Painted Steel  
G-90 Galvanized or AZ-50
- ♦ .032" Kynar 500® Painted Aluminum
- 16 and 20 ounce Copper  
(Please inquire)
- Kynar 500® and substrate testing data  
available (See website)
- “Oil Canning” is an inherent characteristic of  
roof and wall products, and not a defect,  
which is not a cause for panel rejection

## FINISHES

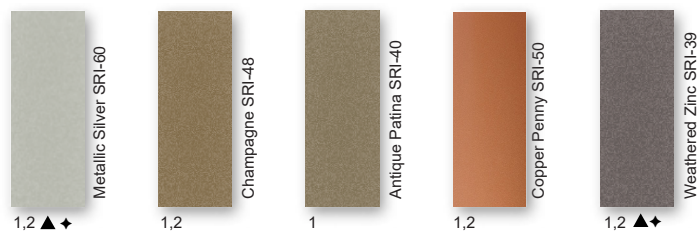
- 21 Standard Colors, 5 Metallic Colors and 4 Specialized Materials
- Kynar 500® Paint System - the ultimate in exterior durability and color retention
- “Cool” color pigments are specially designed to reflect infrared light, reducing heat gain to dwelling, and conform with ENERGY STAR® criteria
- Superior quality, two coat, 70% resin finish, applied at a 1 mil. thickness
- 40 year residential paint warranty
- 20 and 30 year commercial paint warranty: Contact TMP for warranty specifications



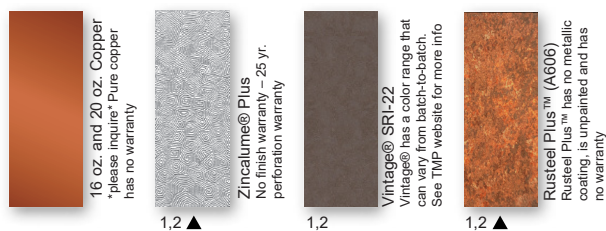
## STANDARD COOL KYNAR 500® COLORS



## PREMIUM METALLIC COOL KYNAR® COLORS



## SPECIALIZED MATERIAL



These printed chips provide a close representation of the colors.

Metal samples are available upon request. Coatings are low gloss 10-15% sheen.  
SRI = Solar Reflective Index. SRI values listed above are in accordance with ASTM E 1890 and are based on actual testing.\*\*\*Oil canning is not a cause for material rejection\*\*\*

